



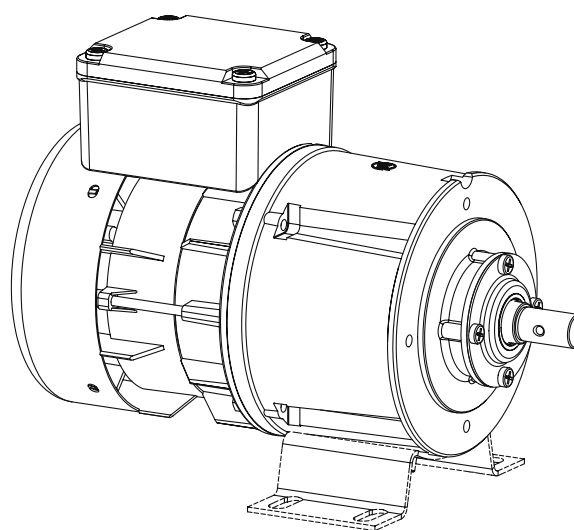
GEAR MOTOR FOR MILK TANK

RECOMMENDED FOR SMALL CAPACITY MILK TANK : FROM 1000 TO 2500 LITERS

SMALL AND COMPACT

CENTERED OUTPUT SHAFT

OUTPUT SHAFT ACCORDING TO THE SPECIFICATIONS OF YOUR AGITATION BLADE (LENGTH & DIAMETER)



APPLICATION :

MOTORIZATION OF THE MILK AGITATION BLADE

TECHNICAL FEATURES :

2 MOUNTINGS AVAILABLE :
SEE DRAWING

2 POLE MOTOR

CLASS F INSULATION

IP44 PROTECTION

SINGLE PHASE MOTOR WITH PERMANENT CAPACITOR OR THREE PHASE

PERMANENTLY LUBRICATED

2 DIRECTIONS OF ROTATION

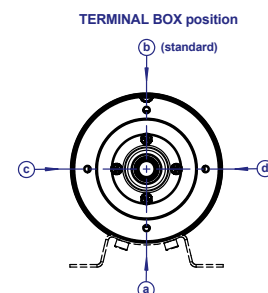
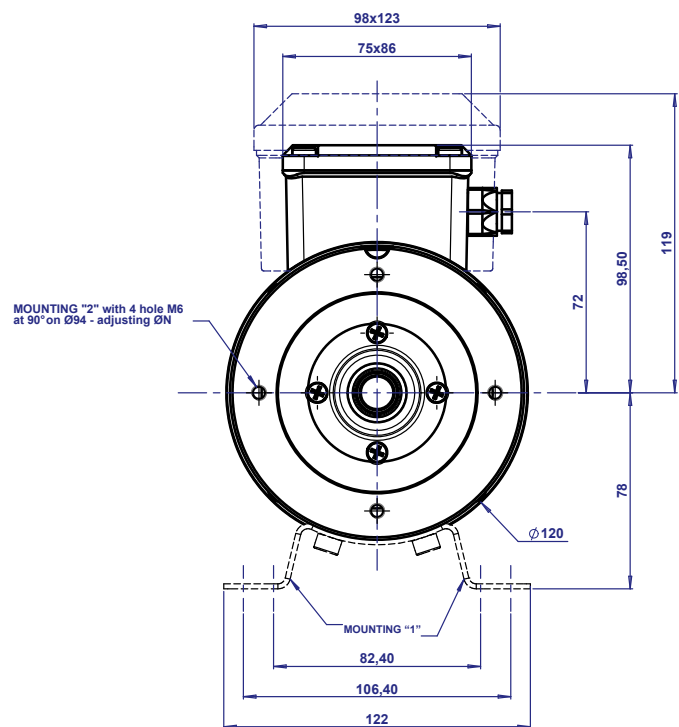
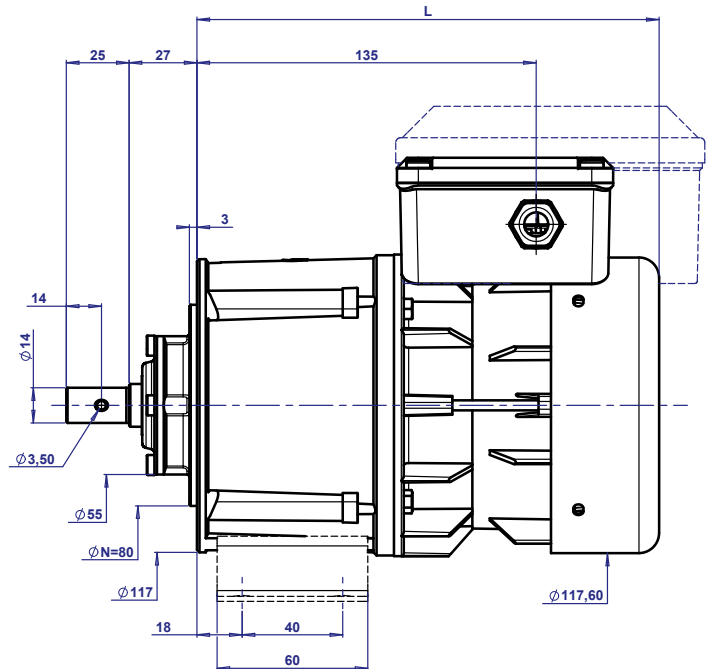
THERMAL CUT-OUT

TERMINAL BOX : 4 POSITIONS

Technical features		Speed N2 RPM	Reduction ratio N2/N1	Rated moment m.daN		Maximum load on slowshaft (1)		Kg
Col.1	Col.2			Col.1	Col.2	Radial daN	Axial daN	
R1C 225 HB	R3 225 HB	21	1/134	1.2	1,4	74	60	3
		30	1/96	0,87	1	64	50	
		39	1/72	0,66	0,76	60	46	
		48	1/59	0,54	0,62	56	42	

(1) Applied in the middle of the shaft end

Motor features	Single phase with capacitor 230 V-50 Hz	Three phase 230/400 V 50 Hz	Rated moment cm.N	Output power W	Speed n1 RPM	Rated current 230 V - A	IA / IN	Cd / Cn	Cos
1C 225	•		13,4	38	2700	0,47	1,67	1,4	0,99
3 225		•	15,5	44	2700	0,29	2,45	0,97	0,82



OPTIONS :

SEPARATED THERMAL CUT-OUT
(SINGLE AND THREE PHASE)

IP55 PROTECTION

OUTPUT SHAFT ACCORDING TO THE
SPECIFICATIONS SUITABLE TO THE AGITATOR

SPECIAL VOLTAGES AND FREQUENCIES
(60 HZ AND 50/60 HZ)

MICRO-SWITCH INCORPORATED
IN THE TERMINAL BOX